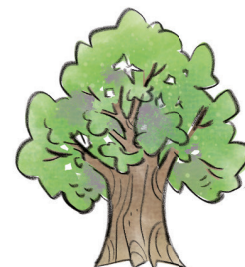
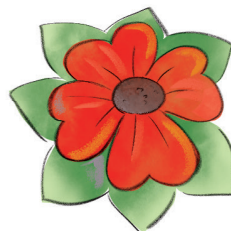
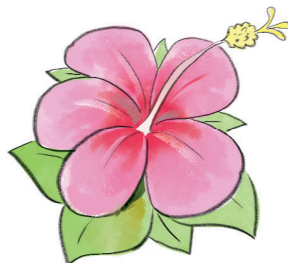
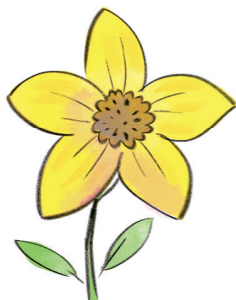
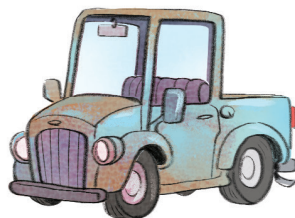
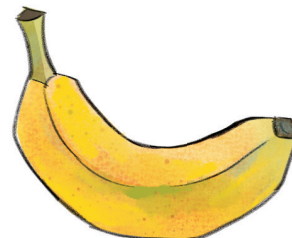
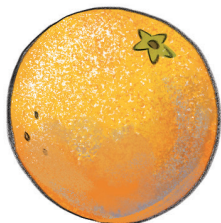


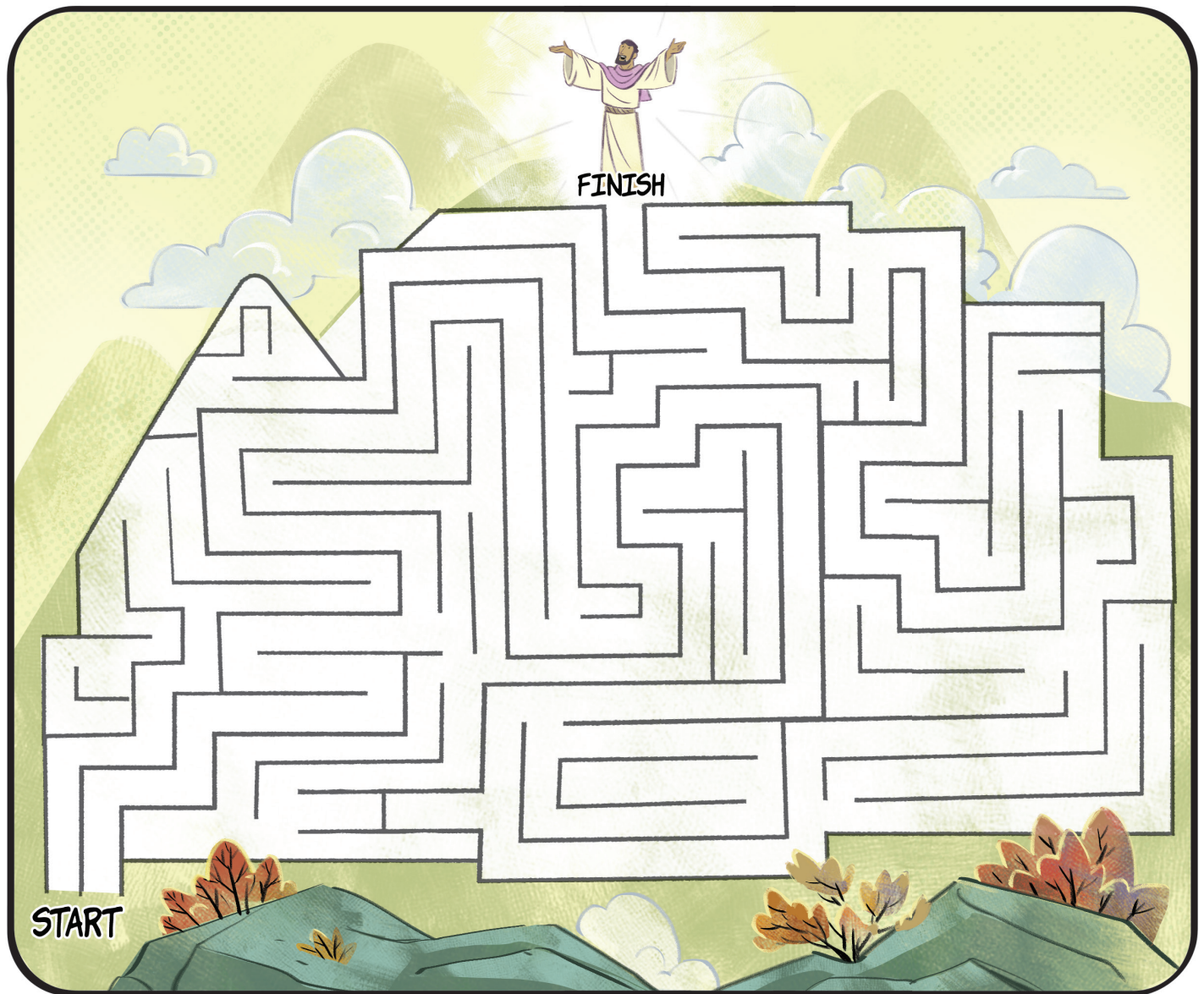
# Which Is Different?

**INSTRUCTIONS:** Circle the item in each row that is different from the others.



# To the Top

**INSTRUCTIONS:** Find the correct path from the bottom of the mountain to the top, where Jesus is.



Recommended Age: Younger



## Up on a Mountain

Use the clues to match each description with the correct person.

(Tip: Mark an X in spaces that don't fit and an O in spaces that do.)

### Clues:

1. Moses did not go to heaven in a whirlwind.
2. The Son of God came to rescue people from sin.
3. Elijah did not lead God's people out of Egypt.
4. The prophet to Israel went to heaven in a whirlwind.
5. God spoke through a burning bush to the man who would lead God's people out of Egypt.
6. Moses did not come to rescue people from sin.
7. Jesus is the Son of God.

	Son of God	prophet to Israel	led God's people out of Egypt	God spoke to him through a burning bush	went to heaven in a whirlwind	came to rescue people from sin
Moses						
Elijah						
Jesus						
God spoke to him through a burning bush						
went to heaven in a whirlwind						
came to rescue people from sin						

## Changed!

Use the code to fill in the blanks.

J \_ \_ \_ \_ W \_ D \_ \_ \_ L \_ \_ Y \_ \_  
 P \_ \_ \_ , J \_ M \_ \_ , \_ \_ D J \_ \_ \_

# THE TRANSFIGURATION : a change in Jesus' appearance

